

The Fields of David Smith

A Changing Exhibition at Storm King Art Center 1997•1998•1999

May 17 through November 15, 1999

Exhibition Checklist

Dimensions are in feet and inches; height precedes width precedes depth.

The abbreviation "Krauss" followed by a number refers to the number assigned to the work by Rosalind Krauss in *The Sculpture of David Smith; A Catalogue Raisonné* (New York: Garland Publishing, 1977).

OUTDOOR SOUTH LAWN

David Smith

Personage of May, 1957

Bronze

71 5/8 x 31 1/2 x 18 1/2"

Krauss 425

Storm King Art Center; Gift of the Ralph E. Ogden Foundation, Inc.

David Smith

XI Books III Apples, 1959

Stainless steel

7' 10" x 35" x 16 1/4"

Krauss 465

Storm King Art Center; Gift of the Ralph E. Ogden Foundation, Inc.

David Smith

Sentinel V, 1959

Stainless Steel

12' 2" x 47 1/2" x 21"

Krauss 470

The Collection of Candida and Rebecca Smith

David Smith

Superstructure on 4, 1960

Stainless steel

8' 10 3/4" x 6' 7 3/4" x 22"

Krauss 493

Sheldon Memorial Art Gallery and Sculpture Garden, University of Nebraska-Lincoln.
Bequests of Frances Sheldon and Adams Bromley Sheldon. 1969.U-656

SOUTH LAWN (continued)

David Smith

Becca, 1965

Stainless steel

9' 5 1/4" x 10' 3" x 30 1/2"

Krauss 646

The Metropolitan Museum of Art.

Bequest of Miss Adelaide Milton de Groot (1876-1967), by exchange, 1972

David Smith

Untitled

1964

Stainless steel

8' 1/4" x 5' 3" x 2 3/8"

Krauss 645

Collection, Art Gallery of Ontario, Toronto.

Purchased with the assistance from the Women's Committee Fund, 1968

David Smith

Untitled (Candida), 1965

Stainless steel

8' 6 3/4" x 10' x 31 1/4"

Krauss 648

The Collection of Candida and Rebecca Smith

David Smith

Cubi I, 1963

Stainless Steel

10' 4" x 34 1/2" x 33 1/2"

Krauss 649

The Detroit Institute of Arts, Founders Society Purchase, Special Purchase Fund

David Smith

Cubi II, 1962

Stainless steel

10' 10 1/2" x 36 7/8" x 23 7/8"

Krauss 650

The Collection of Candida and Rebecca Smith

SOUTH LAWN (continued)

David Smith

Cubi XIII, 1963

Stainless steel

9' 5 7/8" x 6' 10 1/4" x 21 3/4"

Krauss 661

The John B. Putnam, Jr. Memorial Collection, Princeton University

David Smith

Cubi XXIV, 1964

Stainless steel

9' 6 1/4" x 7' 1/4" x 32"

Krauss 672

Carnegie Museum of Art, Pittsburgh; Howard Heinz Endowment Fund, 1967

David Smith

Volvi V, 1962

Steel

7' 2 5/8" x 21 1/2" x 21 3/4"

Krauss 562

Hirshhorn Museum and Sculpture Garden, Smithsonian Institution, Gift of the Ralph E. Ogden Foundation, Inc. 1967.10

David Smith

Volvi XX, 1961

Steel

62 1/2" x 44" x 29"

Krauss 606

Storm King Art Center, Gift of the Ralph E. Ogden Foundation, Inc.

David Smith

Oval Node, 1963

Steel painted white

81" x 1' 7" x 8"

Krauss 620

The Collection of Candida and Rebecca Smith

David Smith

Tower I, 1963

Stainless steel

23' 6" x 34' 6" x 36"

Krauss 625

The Collection of Candida and Rebecca Smith

**OUTDOOR
EAST LAWN & PATIO**

David Smith

Portrait of a Painter, 1954

Bronze

8' 1/2" x 24 3/4" x 12"

Krauss 326

The Collection of Candida and Rebecca Smith

David Smith

The Sitting Printer, 1954-55

Bronze

7' 3" x 15 3/4" x 17"

Krauss 328

Storm King Art Center; Gift of the Ralph E. Ogden Foundation, Inc.

David Smith

Study in Arcs, 1957

Steel painted pink

11' x 9' 6 1/2" x 36 1/2"

Krauss 473

Storm King Art Center; Gift of the Ralph E. Ogden Foundation, Inc.
1967.10

David Smith

Three Ovals Soar, 1960

Stainless steel

11' 3 1/2" x 31" x 23"

Krauss 498

Storm King Art Center; Gift of the Ralph E. Ogden Foundation, Inc.

David Smith

Dida's Circle on a Fungus, 1961

Steel painted various colors

8' 4" x 47" x 24"

Krauss 512

The Collection of Candida and Rebecca Smith

David Smith

Lunar Arc, 1961

Steel painted white

11' 2" x 48" x 18"

Krauss 519

Donald L. Bryant, Jr. Family Trust

EAST LAWN & PATIO (continued)

David Smith

Rebecca Circle, 1961

Steel painted yellow-green, black, red, and white

6' 7" x 53" x 24"

Krauss 524

The Collection of Candida and Rebecca Smith

David Smith

Primo Piano III, 1962

Steel painted white

10' 5" x 12' 1" x 18"

Krauss 554

The Collection of Candida and Rebecca Smith

David Smith

Voltri V, 1962

Steel

7' 2 5/8" x 39 1/2" x 21 3/4"

Krauss 562

Hirshhorn Museum and Sculpture Garden, Smithsonian Institution. Gift of Joseph H.

Hirshhorn, 1966

David Smith

Volton XX, 1963

Steel

62 1/2 x 34 x 29"

Krauss 604

Storm King Art Center; Gift of the Ralph E. Ogden Foundation, Inc.

David Smith

Oval Node, 1963

Steel painted white

8' x 7' 1" x 18"

Krauss 623

The Collection of Candida and Rebecca Smith

David Smith

Tower I, 1963

Stainless steel

23' 6" x 34" x 36"

Krauss 625

The Collection of Candida and Rebecca Smith

EAST LAWN & PATIO (continued)

David Smith

Untitled, 1963

Steel painted white

7' 4" x 33" x 26"

Krauss 628

The Collection of Candida and Rebecca Smith

David Smith

Becca, 1964

Steel

6' 6" x 47 1/2" x 23 1/2"

Krauss 629

Storm King Art Center; Gift of the Ralph E. Ogden Foundation, Inc.

David Smith

Construction December II, 1964

Steel

6' 10 3/4" x 67 1/2" x 30 1/2"

Krauss 643

The Collection of Candida and Rebecca Smith

David Smith

Untitled, 1964

Stainless steel

9' 9 1/2" x 62 1/2" x 16 3/4"

Krauss 644

Collection of The Newark Museum. Purchase 1967, The Charles W. Engelhard Foundation Fund

David Smith

Cubi V, 1963

Stainless steel

8' x 6' 1" x 22"

Krauss 653

Jon and Mary Shirley

David Smith

Cubi XI, 1963

Stainless steel

9' x 32" x 39"

Krauss 659

Calvin Cafritz

David Smith

Cubi XXII, 1964

Stainless steel

8' 7 3/4" x 6' 3/4" x 35"

Krauss 670

Yale University Art Gallery, Stephen Carlton Clark, B.A. 1903, Fund

David Smith

Cubi XXVII, 1965

Stainless steel

9' 3 3/8" x 7' 3 3/4" x 34"

Krauss 675

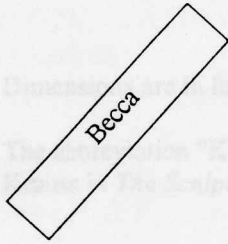
Solomon R. Guggenheim Museum, New York. By exchange, 1967



The Fields of David Smith:
A Changing Exhibition at Storm King Art Center 1997 • 1998 • 1999

May 17 through November 15, 1999

SOUTH LAWN



Cubi
XIII

XI Books
III
Apples

Cubi
XXIV

Untitled (Candida)

Superstructure
on IV

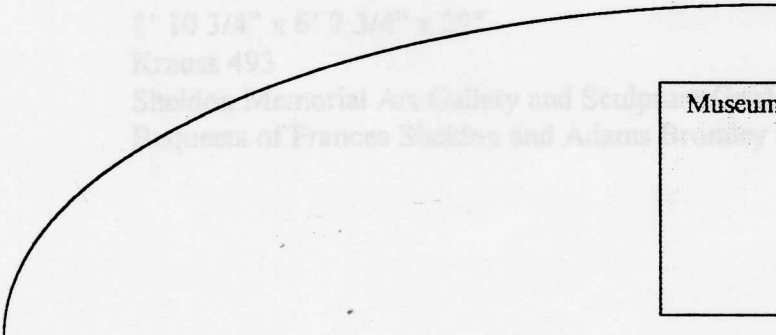
Cubi II

Sentinel
V

Untitled
(1964)

Cubi I

Personage
of May



Museum Building