



Sage and Deer — Scroll

**TEA CADDIES
JAPANESE DOLLS
GLASS PAPERWEIGHTS
CHINESE SNUFF BOTTLES
and
VARIOUS OTHER ARTIFACTS**

On Exhibit at the
STORM KING ART CENTER
Old Pleasant Hill Road
Mountainville, N. Y.

August 30th — October 30th, 1966
2 P.M. - 5:30 P.M. Daily Except Mondays

Admission Free

FOREWORD

In 18th Century China, when craftsmen were more active, ingenious and encouraged than at any other time in history, the use of snuff was widespread. Since Chinese garments had no pockets, tiny bottles with tight-fitting stoppers were used instead of the boxes which were popular in Europe. Craftsmen lavished their skills on every conceivable material, from plain glass to the finest gem-stones, to create snuff bottles which were much in demand as gifts among the nobility. Many wealthy Chinese made collections of the finest bottles, which have long since found their way to museums and private collections all over the world.

The art of doll-making in Japan flourished during the 19th Century, and although little girls had dolls to play with, most dolls were made as works of art rather than toys. On March third, the Girls' Festival, it was the custom to display a set of dolls representing the Emperor and Empress and members of their court. On May fifth, the Boys' Festival, Samurai warrior dolls, little suits of armor, swords and banners were displayed. Dolls representing legendary heroes and characters from **Noh** and **Kabuki** plays were also popular. The finest dolls were made in Kyoto, home of the royal court. Kyoto doll-makers used the finest materials, molding heads and hands from **gofun** (powdered oyster-shell mixed with glue) and dressing the dolls in fine silk and brocades. The costumes are exact replicas of the dress of that period and are complete in every detail, including swords with real blades.

The art of making glass paperweights was perfected in France during the 19th Century, and although some fine weights were made elsewhere in Europe, England and America later in the century, the St. Louis, Baccarat and Clichy factories produced the best in this field. In **millefiori** paperweights, each tiny flower (called a "cane") was constructed of multi-colored glass by an intricate process; the pattern of canes was assembled on a ground of clear or colored glass; and the whole thing was dipped again and again in molten glass to form the bulk of the weight. The skill lay in gauging the exact temperatures of the parts being joined, so that the canes were not pulled out of shape and "layering" (visible lines inside the glass) was avoided. In addition to several typical French paperweights, this exhibit includes a few by contemporary craftsmen whose work is exceptional.

Margaret J. Cutright

ITEMS 1 TO 77 LOANED BY MARGARET J. CUTRIGHT

GLASS PAPERWEIGHTS

1. Ronald Hansen: Flower
2. Baccarat sulphide: John Fitzgerald Kennedy
3. Baccarat: Miniature
4. Saint Louis: "Running Devil"
Reproduction shown in catalogue.
5. Baccarat sulphide: Robert E. Lee
6. Baccarat: Millefiori
7. Clichy: "Sampler"
8. Baccarat sulphide: Thomas Jefferson
9. Baccarat: Millefiori garland
10. Paul Ysart: Flower
11. Pinchbeck: Hunting Scene
12. Paul Ysart: Bouquet
13. Saint Louis: Filligree with scattered canes
14. Buccarat sulphide: Scorpio
15. Saint Louis: Flower
16. Ronald Hansen: Tulip buds
17. Sandwich: Fruit cluster
18. Ronald Hansen: Apple
19. Modern French Overlay
20. Saint Louis Piedouche

JAPANESE DOLLS

21. *Samurai* warrior in full armor, c. 1865
22. Emperor and Empress, Girls' Festival dolls, c. 1790
23. Yoshitune and Benkei, Characters from *Kabuki* play. c. 1865
Reproduction shown in catalogue.
24. Empress Jingo in full armor, c. 1890
Reproduction shown in catalogue.
25. Old Courtier, c. 1850
26. *Samurai* warrior in armor, c. 1880
27. *Sambaso* dancer, c. 1790
Reproduction shown in catalogue.
28. "Tiger Man", *Samurai* warrior, c. 1870
29. Young Empress Jingo, c. 1890
30. *Samurai* in court dress, c. 1830
31. Boys' Festival doll, 11th Century feudal lord, c. 1870
32. Boys' Festival doll, 13th Century warrior, c. 1890
33. *Nara-Noh* doll, Shoji the Drunkard, c. 1880
34. *Nara-Noh* doll, Noh character, c. 1860
35. *Nara* dolls, old couple, c. 1880
36. *Nara-Noh* netsuke
37. *Nara-Noh* netsuke
38. *Nara-Noh* netsuke

CHINESE SNUFF BOTTLES

39. Honey Agate, coral stopper
40. Honey and black agate, relief carving of butterflies.
41. Carved agate, coral stopper.
42. Coral Peking glass.
43. Carved cinnabar.
44. Tiger's Eye rabbit, coral stopper.
45. Carved brown jade with calligraphy.
46. Jasper with baroque pearl overlay.
47. Molded and carved porcelain, signed Ch'ien Lung, jade stopper.
c. 1760
Reproduction shown in catalogue.
48. Gray-white jade, carved amethyst stopper
49. Cloisonne, dragon pursuing pearl of Life.
50. Carved Fei-Ts'ui jade, green jade stopper, c. 1710.
51. Molded and carved porcelain, silver stopper with turquoise.
Reproduction shown in catalogue.
52. Malachite, rose quartz stopper
53. White jade, amazonite stopper. c. 1680

CHINESE SNUFF BOTTLES

54. Carved turquoise
55. Lapis lazuli, high relief carving.
56. Gray crystal, mask handles, carved amethyst stopper.
57. Blue chalcedony, high relief carving.
58. Peking glass, jade imitation, carved white jade stopper.
59. Striated agate, carnelian stopper.
60. Peking milk glass, carved overlay in flower design, jade stopper.
61. Porcelain, underglaze design in blue and red, c. 1810
62. Porcelain, underglaze copper-red figures, signed K'ang Hsi, c. 1650.
63. Porcelain, underglaze design of animals and clouds, signed Yung Cheng (1723-1735)
64. Peking milk glass, carved overlay dragons and symbol of happiness, agate stopper.
65. Lady's green and white jade bottle, carnelian stopper.
66. Snuff saucer, porcelain
67. Lady's agate bottle, tiger's eye stopper.
68. Inside painted master snuff bottle, jade stopper, c. 1660
69. Master cinnabar, white jade stopper.
Reproduction shown in catalogue.
70. Green jade, high relief carving.

VARIOUS OTHER ARTIFACTS

71. Sage and Deer — Scroll
Reproduction shown in catalogue.
72. Scroll: Three Carp
73. Scroll: Old Juro, God of Longevity
74. Wall Screen: Three Seated Figures
75. Black and Gold Lacquer Picnic Hamper
76. Bronze Hand-Warmer, Silver Inlaid Lid
77. Black Iron Tea Pot, Brass Lid

— ITEMS LOANED ANONYMOUSLY —

78. Japanese Lacquer Tea Caddy
Reproduction shown in catalogue.
79. Japanese Peasant — Print
Reproduction shown in catalogue.
80. Chinese Pewter Tea Caddy
Reproduction shown in catalogue.
81. Chinese Porcelain Bowl
82. French Tole Tea Caddy
83. Japanese Birch Bark Tea Caddy
84. Japanese Pewter Tea Caddy



THREE SNUFF BOTTLES

Nos. 51 - 69 - 47



WARRIOR AND STANDARD BEARER – DOLL
No. 23



JAPANESE PEASANT PRINT
Toyokoni, The Third
No. 79



SAMBASO DANCER — DOLL
No. 27



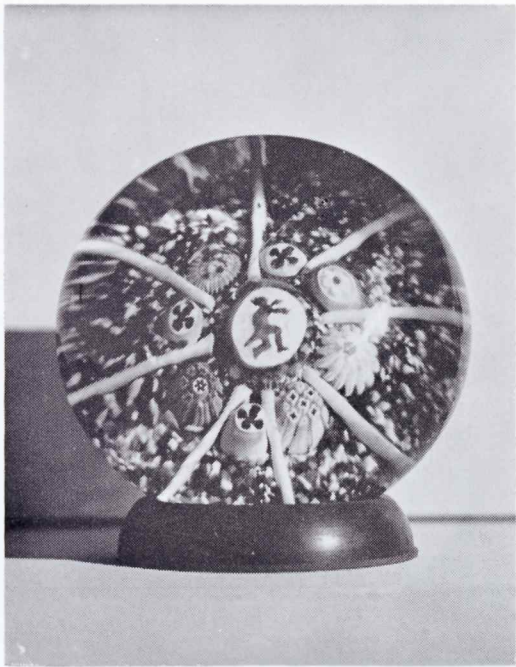
JAPANESE LACQUER TEA CADDY

No. 78



EMPRESS JINGO - DOLL

No. 24



PAPERWEIGHT

No. 4



PEWTER TEA CADDY

No. 80